



# Community Electric Cooperative News

A Touchstone Energy® Cooperative 

## REMINDER:

Don't forget to sign up for Budget Billing by April 1st! Application and agreement for Budget Billing will be published in the March-April issue of *Cooperative Living*.

Check us out on Facebook!



## COMMUNITY ELECTRIC COOPERATIVE

52 W. Windsor Boulevard  
P.O. Box 267  
Windsor, VA 23487-0267  
757-242-6181

After-Hours Outages: 1-855-700-2667

Office Hours: M-F, 8 a.m.-5 p.m.

[www.comelec.coop](http://www.comelec.coop)

President/CEO

Steven A. Harmon

Local Pages Editor

Annette Dickey, CAP-OM

*Community Electric Cooperative is an equal opportunity provider and employer.*

## Convenient Ways to Pay Your Electric Bill

**SmartHub** is the electronic payment tool for Co-op members and allows you to manage your CEC account from your computer, smartphone or tablet. Download CEC's SmartHub app from Apple's App Store or the Google Play/Android Marketplace, and you can pay on the go ... anytime ... anywhere.



**Secure Pay by Phone** provides 24/7 access for members to be directed to a secure area where you can inquire about your account or make a payment using check, VISA or MasterCard. It's easy ... just call our office number (757) 242-6181 and select option "2" to be directed to the Secure Pay by Phone area. You will need your electric account number(s) or phone number as listed on your account with the Cooperative.

**E-Z Pay Program** allows members to have their bank accounts automatically drafted each month. No checks to write or stamps to find! Complete the E-Z Pay application found on the back side of your monthly bill, downloaded from our website or sign up using your SmartHub account.

**Automatic Credit Card Payments** for the amount of your bill can be made from your MasterCard or VISA each month. Sign up using your SmartHub account.

**Pay by Mail** to P.O. Box 267, Windsor, VA 23487. Please include your bill stub.

**Pay at the Office** located at 52 W. Windsor Blvd., Windsor, VA 23487. We accept cash, checks, money orders, VISA and MasterCard at the counter and the drive-thru that is located on the front of our office building. We are open Monday through Friday between 8 a.m. and 5 p.m. Should you come to our office when we are closed, you may still pay your electric bill through our drop box 24 hours a day. It is located on the front of our office to the left of the drive-thru window. We recommend that you pay only with checks or money orders in the drop box since no receipts are provided.



**Feb. 9, 2018, is the deadline for those applying for a VMDAEC Scholarship. For the online application and instructions, visit [www.vmdaec.com](http://www.vmdaec.com) or [www.co-opliving.com/community/scholarship](http://www.co-opliving.com/community/scholarship).**

## 2018 Washington Youth Tour

*Applications being accepted for current juniors and seniors*

Community Electric Cooperative is looking for high school or home-schooled juniors and seniors with an interest in government, history, culture and touring Washington, D.C. This is a week-long, expense-paid trip that previous representatives have described as “the trip of a lifetime”! Travel dates are June 10 through June 14, 2018. Visit [www.comelec.coop/content/youth-tour-0](http://www.comelec.coop/content/youth-tour-0) for application information. Applications must be **received by Feb. 11, 2018**, to be considered. Applicants will be selected and contacted by Feb. 16.



## Space Heater Safety Tips

Space heaters are a great way to warm specific rooms in your home without having to crank up the thermostat, but using space heaters doesn't come without risk! Use the tips below to keep your home safe.

**DO:** Plug your space heater directly into the wall outlet.



**DO:** Keep your space heater in low-moisture rooms.

**DO:** Keep your space heater at a safe distance (at least 3 feet) from kids, pets and flammable items.

**DO:** Buy a unit with an automatic shutoff in case the unit tips over, or you forget to shut it off.



**DO:** Always follow the directions and take a broken space heater to a qualified appliance service center.



**DON'T:** Leave your space heater unattended. Always unplug it before you leave the house or go to bed.



**DON'T:** Use an extension cord to plug in your space heater. It can cause the heater to over-heat, and can be a tripping hazard.

**DON'T:** Place your space heater near curtains, clothing, furniture or bedding.



**DON'T:** Try to repair a broken space heater yourself.

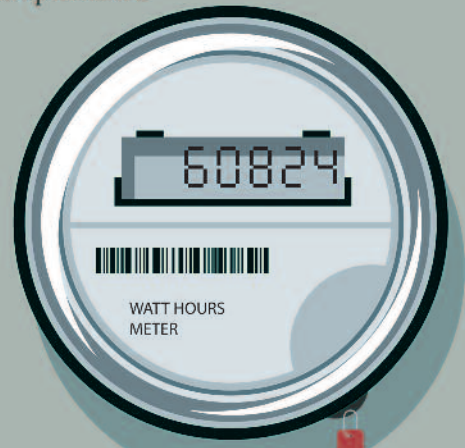


**DON'T:** Put your space heater in your bathroom. The moisture can damage the unit, which could cause it to malfunction.



## DO NOT TAMPER WITH YOUR ELECTRIC METER

Meter tampering can result in electric shock, is illegal and increases electricity rates for other co-op members.



- Never break a meter seal.
- Never open a meter base.
- Never remove a meter or alter an entrance cable in any manner.

If you know or suspect that someone has tampered with their meter, please contact us immediately.

